

**REGIONAL FRAMEWORK AND ACTION PLAN TO IMPLEMENT
THE ASEAN DECLARATION ON STRENGTHENING SOCIAL PROTECTION**

Vision : Uplift the quality of life of ASEAN peoples by 2025.

Goal : Enhance the well-being, welfare, and livelihood of the peoples throughout their life cycle.

Objectives :

- a) Reduce poverty, inequalities, vulnerability, and other risks.
- b) Enhance capacity of the poor and vulnerable groups.
- c) Achieve inclusion and enhance equitable access of the poor, at risk, and vulnerable groups including but not limited to persons with disabilities, older people, youth, women, children, undernourished, victims of disasters, migrant workers, to opportunities and social protection.
- d) Move towards the equitable and sustainable development of the target groups.

Principles¹ :

Strive to adhere to the following principles that are applied in accordance with the domestic laws and policies of respective ASEAN Member States, nationally-defined social protection and its national priorities, and adapted to the different contexts of ASEAN Member States:

1. Everyone, especially those who are poor, at risk, persons with disabilities, older people, out-of-school youth, children, migrant workers, and other vulnerable groups, is entitled to have equitable access to social protection that is a basic human right and on a rights-based/needs-based, life-cycle approach and covering essential services as needed;
2. Extending coverage, availability, quality, equitability and sustainability of social protection should be gradually promoted to ensure optimal benefits to the beneficiaries;
3. Social protection covers, but is not limited to, social welfare and development, social safety-nets, social insurance, social assistance, social services, in ASEAN Member States;

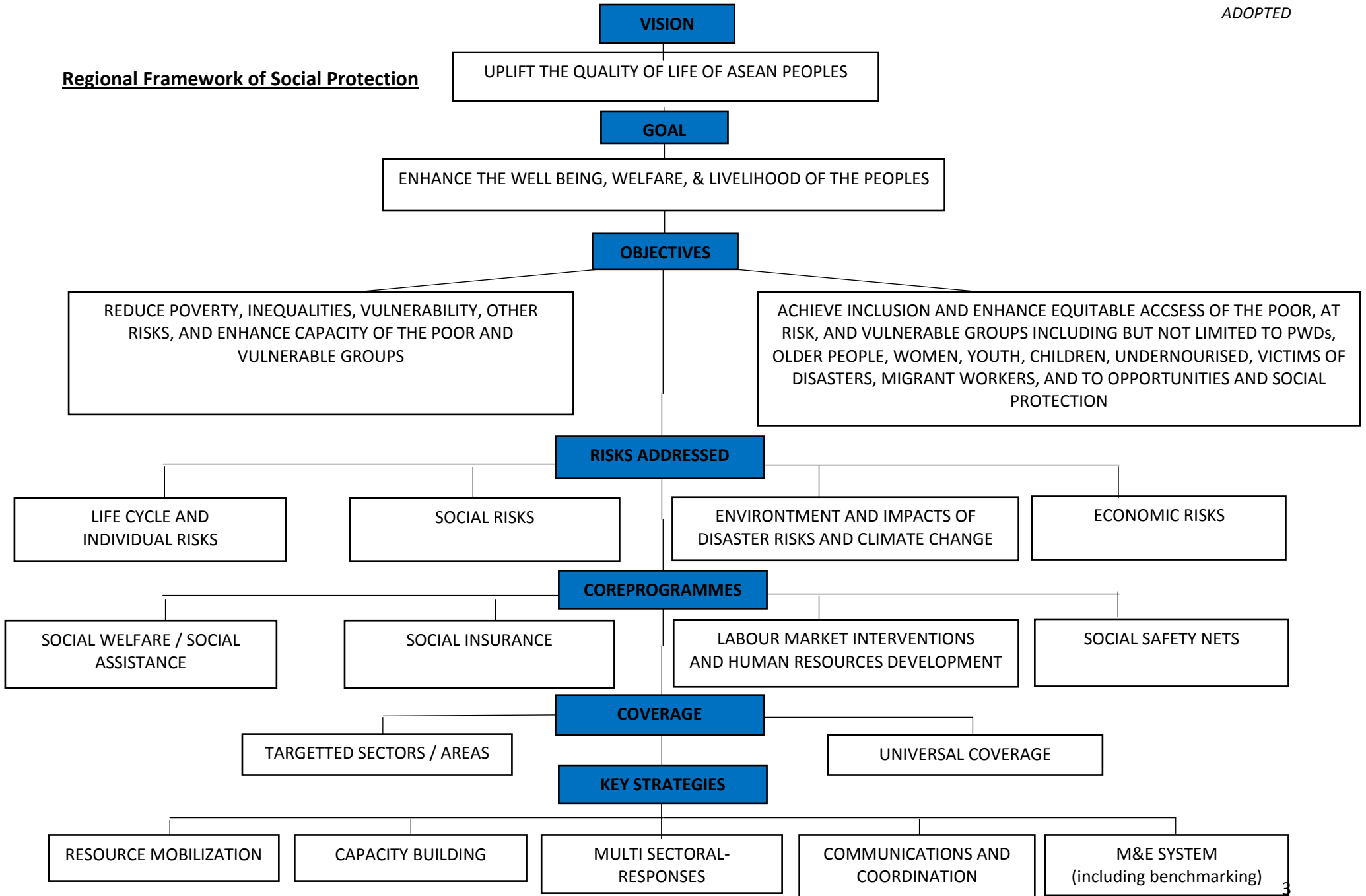
¹ These principles are cited from the ASEAN Declaration on Strengthening Social Protection adopted by the Leaders at the 23rd ASEAN Summit in 2013.

4. Implementation of social protection should be based on respect for fundamental freedoms, promotion and protection of human rights, promotion of social justice, social solidarity, non-discrimination, accessibility, reasonable accommodation, gender equality, social inclusiveness, coherence, and accountability;
5. Implementation of social protection towards progressive realisation in ASEAN Member States is the main responsibility of the respective governments based on national legislations, policies, programmes, strategies, standards and guidelines;
6. Social protection is a cross-cutting issue, hence its implementation requires coordinated and holistic approaches with the involvement of governments, private sectors, development partners, civil society, service providers, and other stakeholders, where appropriate;
7. Family unit and the community are an important element in supporting and delivering social protection services and therefore should be strengthened and preserved;
8. Inclusive and participatory approach should be ensured in the planning, programming and budgeting, implementation, monitoring and evaluation processes of social protection at all levels in the region to realise the strengthening of institutional capacity, transparency and responsiveness to the needs of those concerned;
9. Social protection is an investment in people that should be supported by adequate resources in order to empower them to meet their basic needs;
10. Social protection shall be adaptive to the different risks such as lifestyle and individual risks, social risks, and emerging risks and vulnerabilities faced by the region such as, but not limited to, changes in the economy and labour markets and impacts of climate change, disasters and economic crises.

Definition of social protection:

Interventions that consist of policies and programmes designed to reduce poverty, inequalities, and vulnerability by assisting the poor, at risk, vulnerable groups such as but not limited to persons with disabilities, older people, youth, women, children, undernourished, victims of disasters, migrant workers, and as well as families and communities to enhance their capacities to better manage risks and enhance equal access to essential services and opportunities on a rights based/needs based approach. Definitions of migrant workers and applicability of social protection schemes shall be in accordance to the prevailing national laws, policies and regulations of ASEAN Member States.

Regional Framework of Social Protection



ART	KEY RESULT AREAS AND STRATEGIC ACTIONS	MAIN STRATEGY	ASEAN SECTORAL BODY	POTENTIAL PARTNER	CROSS PILLAR (Y/N)	COORDINATING MECHANISM	RESOURCES NEEDED	INDICATORS OF SUCCESS
POLICY AND PROGRAM DEVELOPMENT								
11	Support national policies, strategies and mechanisms to strengthen the implementation of social protection programme, as well as effective targeting systems to ensure social protection services would go to those most in need							
	a) Support national policies, strategies and mechanisms							
	<ul style="list-style-type: none"> Multi-agency integration to implement social protection Support and link database among ASEAN Member States for equal standard on social protection such as social security 	Capacity building	SOMSWD SLOM ACW ACWC ACDM SOMHD SOMRDPE SOM-AMAF Development Planning Agencies	UN Agencies Dialogue Partners Workers' organisations Employers' organisations World Bank ADB	Y	Inter-sectoral consultation through SOCCOM SOCA	Expertise Technical assistance Financial assistance	Number of inter-agency partnership/s to implement social protection programmes.
	<ul style="list-style-type: none"> Social safety net in time of crisis/disaster 	Capacity building	SOMSWD ACDM SOM-AMAF SLOM SOMHD	UN Agencies Dialogue Partners Workers' organisations Employers' organisations World Bank ADB	Y	Inter-sectoral consultation	Expertise Technical assistance Financial assistance	Established social safety net for disaster/crisis period (planned or on-going)

	<ul style="list-style-type: none"> Support efforts to review and enhance policies, where necessary, on social insurance, social welfare/assistance, social safety net and labour market intervention for vulnerable groups including but not limited to persons with disabilities, older people, victims of disaster and informal workers especially women including those in MSMEs, small farmers and fisher folks 	Capacity building	SOMSWD SLOM SOMRDPE SOM-AMAF SOMHD	UN Agencies HelpAge International	Y	Inter-sectoral consultation	Expertise Technical assistance Financial assistance	Enhanced/amended /expanded policies on social insurance, social welfare/assistance, social safety net and labour market interventions.
	<ul style="list-style-type: none"> Review national Early-Childhood Care and Development (ECCD) policies, strategies, and programmes that focus on children of pre-primary school age in ASEAN Member states 	Capacity building	SOMSWD SOMHD SOM-ED ACWC	UNICEF	Y	Inter-sectoral consultation	Expertise Technical assistance Financial assistance	Documentation report
	<ul style="list-style-type: none"> Explore the development of specific programmes that will link social protection with labour market inclusion i.e. vocational training for the vulnerable groups including occupational-based rehabilitation of persons with disabilities and skills development of older persons, job creation with the provision of loans or incentives, credits and public work programmes, and internships/apprenticeships for youth and poor women 	Capacity building	SLOM SOMSWD SOM-ED ACWC	UN Agencies Workers' organisations Employers' organisations	Y	Inter-sectoral consultation	Expertise Technical assistance Financial assistance	Number of Programmes linking social protection with labour market inclusion implemented
	<ul style="list-style-type: none"> Promote capacity building for the stakeholders on issues related to the extension of social 	Capacity building	SOMSWD SLOM	UN Agencies Workers' organisations	Y	Inter-sectoral consultation	Expertise Technical	Number of Capacity building activities conducted

	protection at regional levels;			Employers' organisations HelpAge International			assistance Financial assistance	
	<ul style="list-style-type: none"> Encourage regular consultations and dialogue with social partners (civil societies, workers and employers group, all stakeholders) 	Capacity building	SOMS SLOM	UN Agencies Workers' organisations Employers' organisations CSOs	Y	Inter-sectoral consultation	Expertise Technical assistance Financial assistance	Number of consultations and dialogue with social partners conducted
	<ul style="list-style-type: none"> Conduct a comparative studies on welfare laws and Social welfare systems in ASEAN 	Capacity building	SOMS SLOM	UN Agencies Workers' organisations Employers' organisations World Bank ADB	Y	Inter-sectoral consultation	Expertise Technical assistance Financial assistance	Number of available/published case study/research
	b) Support effective targeting systems	Capacity building	SOMR DPE Development Planning Agency	UN Agencies Workers' organisations Employers' organisations World Bank ADB HelpAge International	Y	Inter-sectoral consultation	Expertise Technical assistance Financial assistance	
12	Advocate strategies that promote coverage, availability, comprehensiveness, quality, equality, affordability and sustainability of various SP services including:							

<p>a) Social insurance for informal workers: Where appropriate and allowing for domestic policy consideration, provide for a mechanism so as to institute government subsidies/loans as an incentive for informal workers including but not limited to self-employed, micro entrepreneurs, small farmers, and fisher folks to contribute to the voluntary social insurance system; or explore the possibility of having a voluntary social insurance system if none was created</p>	<p>Communication and coordination</p>	<p>SLOM SOMRDPE SOM-AMAF</p>	<p>UN Agencies ADB</p>	<p>Y</p>	<p>Inter-sectoral consultation</p>	<p>Expertise Technical assistance Financial assistance</p>	<p>Institutionalized government subsidy</p>
<p>b) Social assistance programmes for persons with disabilities, elderly, children and other vulnerable groups to be able to access social services</p>	<p>Communication and coordination</p>	<p>SOMSWD ACWC</p>	<p>UN Agencies HelpAge International</p>	<p>Y</p>	<p>Inter-sectoral consultation</p>	<p>Expertise Technical assistance Financial assistance</p>	<p>Number of social assistance programmes implemented/enhanced/developed Number of vulnerable groups/beneficiaries provided with social assistance programmes</p>
<p>c) Explore measures to promote greater access to social protection programmes and services</p>	<p>Communication and coordination</p>	<p>SOMSWD SLOM ACW ACWC ACDM SOMHD SOMRDPE SOM-</p>	<p>UN Agencies Dialogue Partners</p>	<p>Y</p>	<p>Inter-sectoral consultation</p>	<p>Expertise Technical assistance Financial assistance</p>	<p>Number of GO-NGO providing social assistance Number of vulnerable groups/beneficiaries provided with social</p>

			AMAF Develop- ment Planning Agencies					assistance programmes Number of Policies in providing greater access to SP programmes/ services enacted Number of social marketing strategies initiated to popularize SP programmes and services
	d) Where appropriate, encourage the participation of workers' organizations and employers' organizations, and explore possible partnership with the civil society to raise awareness of and better reach the informal workers	Communication and coordination	SLOM SOM- AMAF	UN Agencies Workers' organisations Employers' organisations Civil society organisations	Y	Inter- sectoral consultation	Expertise Technical assistance Financial assistance	Number of workers and employers' organization participate in awareness raising Number of forged partnerships with the CSOs
16	Strengthen the capacity of government officials, communities, service providers, and other stakeholders for better responsiveness, coordination and effectiveness of social protection and delivery services at regional, national and local levels							
	a) Advocacy on social protection							
	<ul style="list-style-type: none"> Foster deeper understanding of the common framework on social protection that facilitates the establishment and/or strengthening of 	Capacity building	SOMSWD	ACDM ACW ACWC	Y (with	SOCA SOCCOM	Expertise Technical	Adoption of the social protection framework and

national social protection frameworks/ platforms/ mechanisms			SLOM SOM-AMAF SOMHD SOMRDPE Development Planning Agencies	AEC, APSC)		assistance Financial assistance	action plan by the ASEAN Leaders
<ul style="list-style-type: none"> • Raise awareness of the target beneficiaries on social protection measures and its accessibility 							
b) Integrate gender perspectives in communication and capacity building activities at the regional level	Capacity building	SOMS ACW ACWC	UN Agencies	Y (with AEC, APSC)	SOCA AMMSWD	Expertise Technical assistance Financial assistance	Presence/use of gender mainstreaming tools in social protection capacity building
c) Study the portability of social insurance for documented migrant workers and their immigrant families, specifically the feasibility of its transferability across ASEAN Member States	Capacity building	SLOM SOMS SOMHD	UN agencies Workers' Organisation s Employers' Organisation s	Y (with AEC, APSC)	SOCA	Expertise Technical assistance Financial assistance	Presence of the study and recommendations to include areas of portability
d) Recommend minimum standards and training needs for certain professions, e.g. medical professionals, nurses, social workers, etc.	Capacity building	SLOM SOMS SOMHD	UN Agencies	Y	SOCA	Research Expertise and technical assistance Tools of analysis	Agreed minimum standard

17	Collectively accelerate the progress towards Universal Health Coverage (UHC) in all ASEAN Member States by strengthening capacity to assess and manage health systems to support UHC through sharing of experiences, information and experts							
	Enhance the National Policy/Legislation for Universal Health Coverage in ASEAN Member States:							
a) Advocacy	Capacity building Capacity building	SOMHD through the ASEAN Plus Three UHC Network SLOM SOMSWD	UN Agencies World Bank Asian Development Bank	Y AEC APSC	SOC-COM SOCA ASEAN Plus 3 UHC Professional associations	Financial resources Technical assistance Gather relevant data Resource persons e.g. technical assistance from CAP UHC Media participation	Agreed country-based minimum standards of parameter to measure Universal Health Coverage (UHC) for relevant levels of the health system Legislation/policy that includes UHC	
<ul style="list-style-type: none"> Compilation and Sharing information of UHC in AMS, which could include baseline study 								
<ul style="list-style-type: none"> Stakeholder assessment: Map and link ASEAN Platform/Bodies working for the UHC and Social Protection 								
CAPACITY BUILDING								
16	Strengthen the capacity of government officials, communities, service providers, and other stakeholders for better responsiveness, coordination and effectiveness of social protection and delivery services at regional, national and local levels							
	a) Build capacity and capability of service providers	Capacity Building	SOMSWD	UN agencies World Bank	Y	SOCA SOC-COM	Expertise and human resources	Presence of baseline information
b) Facilitate learning from each other's experiences and best practices	SOMHD through the ASEAN		Asian Development Bank	(with AEC, APSC)	ASEAN Plus Three UHC		Common standards of service providers	

	<p>c) Ensure availability of technical assistance and expertise that strongly consider and are sensitive to the needs of vulnerable groups</p> <p>d) Strengthen coordination and enlist the support of United Nation Agencies, regional and inter-regional cooperation mechanisms to improve the capacity of government agencies and other stakeholders on social protection throughout technical assistance programs, capacity building and pilot projects in accordance with the level of development and interests of the member states</p>		<p>Plus Three Network</p> <p>Other sectoral bodies</p>	<p>HelpAge International</p>		<p>Network</p> <p>Professional associations /private sector</p>	<p>Technical assistance</p> <p>Financial assistance</p>	
MONITORING & EVALUATION								
13	Promote results-based and evidence-based national assessments and benchmarking of social protection delivery services in ASEAN Member States that would contribute to the progressive implementation, effective monitoring and evaluation, as well as optimum impact of social protection;							
14	Explore and develop assessment tools and regional statistical indicators where appropriate to measure the impact of social protection to the holistic development of vulnerable groups for future planning towards available accurate baseline data collection;							
	<p>a) Explore the development of regional baseline information and assessment of social protection policies, programmes and strategies in AMS (disaggregated based on sectors, target groups, age, and sex) where appropriate, and allowing for domestic policy considerations</p>	<p>Monitoring and evaluation</p> <p>Capacity building</p>	<p>SOMSWD (lead body)</p> <p>SLOM</p> <p>ACW</p> <p>ACWC</p> <p>ACDM</p> <p>SOMHD</p> <p>SOMRDPE</p> <p>SOM-AMAF</p> <p>Development</p>	<p>UN Agencies</p> <p>World Bank</p> <p>ADB</p> <p>HelpAge International</p> <p>INGOs</p> <p>Workers' organisations</p> <p>Employers' organisations</p> <p>Academia</p>	<p>Y</p>	<p>SOMSWD as the coordinating body</p>	<p>Inputs from relevant national and regional surveys and studies</p>	<p>Baseline report on social protection</p>

			Planning Agencies ACSS					
b)	Explore compiling relevant global and national indicators on social protection to facilitate the development of ASEAN statistical indicators on social protection where appropriate, and allowing for domestic policy considerations	Monitoring and evaluation Capacity building	SOMSWD (lead body) SLOM ACW ACDM SOMHD SOMRDPE SOM-AMAF Development Planning Agencies ACSS	UN Agencies World Bank ADB INGOs Workers' organisations Employers' organisations Academia	Y	SOMSWD or SOCA as the coordinating body	Adopted global indicators of SDGs	Compilation of indicators
c)	Explore the development of ASEAN statistical indicators on social protection in line with the MDG indicators and regularly update the database where appropriate, and allowing for domestic policy considerations	Monitoring and evaluation Capacity building	SOMSWD (lead body) SLOM ACW ACDM SOMHD SOMRDPE SOM-AMAF Development Planning	UN Agencies World Bank ADB INGOs Workers' organisations Employers' organisations Academia	Y	SOMSWD (data generation from sectoral bodies)	ASEAN Dialogue Partners' support	Adopted ASEAN statistical indicators Established ASEAN database of social protection

			Agencies ACSS					
INSTITUTIONALIZATION AND SUSTAINABILITY								
15	Allocate adequate financial resources for social protection in line with national targets and subject to the capacity of each Government							
	a) Share good practices and strategies among AMS to advocate for improving national financial resources for social protection	Resource mobilisation	SOMSWD	Finance ministries	Y AEC	SOMSWD	Advocacy tools	Inclusion of budgetary items for social protection in the national budget plans of relevant agencies
	b) Include in the benchmarking (Art. 13 above) data on the percentage and size of government budgets for social protection (disaggregated based on programme)	Capacity building		Development Planning Agency HelpAge International				
16	Strengthen the capacity of government officials, communities, service providers, and other stakeholders for better responsiveness, coordination and effectiveness of social protection and delivery services at regional, national and local levels;							
	<ul style="list-style-type: none"> Promote the active participation of other relevant sectors 	Communication and coordination	SOMSWD	All relevant sectoral bodies	Y AEC APSC	SOCA SOCCOM	Financial resource	Agreement/contribution on areas of collaboration subject to capacity of the sectors

List of ASEAN Sectoral Bodies:

- SOMSWD : ASEAN Senior Officials Meeting on Social Welfare and Development
- SLOM : ASEAN Senior Labour Officials Meeting
- SOMRDPE : ASEAN Senior Officials Meeting on Rural Development and Poverty Eradication
- SOMHD : ASEAN Senior Officials Meeting on Health and Development
- ACW : ASEAN Committee on Women

- ACDM : ASEAN Committee on Disaster Management
- SOM-AMAF : Senior Officials Meeting of the ASEAN Ministers on Agriculture and Forestry (SOM-AMAF)
- ACSS : ASEAN Community Statistical System Committee
- ACWC : ASEAN Commission on the Promotion and Protection of the Rights of Women and Children
- SOM-ED : ASEAN Senior Officials Meeting on Education